

COMMERCE

PRESS KIT

www.commercethemovie.com

JOEL
GRETSCH

ANNABETH
GISH

NOEL
FISHER

COMMERCE

WRITTEN AND DIRECTED BY
LISA ROBERTSON



LONG SYNOPSIS

In the grip of a spiraling compulsion that threatens to alienate him from his family, a Los Angeles businessman, Ken, undertakes a desperate cross-town journey where a chance meeting on an L.A City bus with a young gambler, Pete, could save or destroy Ken in the City of Commerce.

A psychological drama/thriller, *COMMERCE* is described as “a taut, suspenseful account of a compulsive gambler” that examines “the impact this addiction has on his life and family.”

Stars Joel Gretsch (*V*, Steven Spielberg’s *TAKEN*, *THE LEGEND OF BAGGER VANCE*), Annabeth Gish (*BROTHERHOOD*, *WEST WING*, *MYSTIC PIZZA*) and Noel Fisher (*SHAMELESS*; *BATTLE: LOS ANGELES*, *HATFIELDS AND McCOYS*; *TWILIGHT: BREAKING DAWN: Part II*).

SHORT SYNOPSIS

In the grip of a spiraling compulsion that threatens to alienate him from his family, Los Angeles businessman, Ken, encounters a young gambler, Pete, who could save or destroy him in the City of Commerce.

FEATURE FILM NEWS

The feature screenplay of *COMMERCE*, written by Lisa Robertson and based on her short film of the same name, has been optioned by LEEDEN MEDIA with Lisa attached to direct.

Leeeden’s first film, “*SOME GIRL(S)*” written and Exec Produced by Neil LaBute, and starring Adam Brody, Kristen Bell, Emily Watson, Zoe Kazan – will premiere at the 2013 SXSW Film Festival. *COMMERCE* is slated for Summer 2013 production dates.

COMMERCE

POSITIONING STATEMENT

TITLE: COMMERCE

TAGLINE: How much can you lose when you're chasing the win?

CONCEPT: Commerce is a raw, character-driven, psychological drama that explores the impact of a compulsive gambling addiction on its perpetrators and their children.

SYNOPSIS: COMMERCE follows the journey of Ken, a successful and loving family man in the grip of a spiraling compulsion who devastates his wife, Beth, with his lies, and throws his young daughter, Essie, into confusion as he leaves home yet again to 'fix' his life, leading to a chance encounter with a young gambler, Pete, on an LA City bus, who could to save Ken or leave him at rock bottom in the City of Commerce.

STATEMENT: A film of the prestigious Directing Workshop for Women at American Film Institute, COMMERCE, is an ambitious student film; a tense, psychological drama made with a fly on the wall realism, that traverses LA from its tony Larchmont neighborhood, through Koreatown (shooting on an LA City bus) to the worlds largest poker club, Commerce Casino, in the City of Commerce, that attracts literally thousands of players per any given hour.

COMMERCE explores the cost of a compulsive gaming addiction on its perpetrator as well as its scarring effects on family and targets both male and female audiences, ages 15-60.

CREDIT BLOCK:

AMERICAN FILM INSTITUTE DIRECTING WORKSHOP FOR WOMEN presents

A TIME/STEP FILMS production

COMMERCE

JOEL GRETSCH ANNABETH GISH NOEL FISHER SCARLET O. SELZNICK

CASTING DIRECTOR KAREN P. MORRIS ORIGINAL MUSIC BY STUART MICHAEL THOMAS

EDITOR CARTER CARTER DIRECTOR OF PHOTOGRAPHY MICHAEL NEGRIN ASC

CO-PRODUCER KATRINA JANKOWSKI PRODUCED BY ERICA MCINTOSH LINDA MONTANTI

DENISE PLEUNE & LISA ROBERTSON WRITTEN AND DIRECTED BY LISA ROBERTSON

COMMERCE

THE FILMMAKERS



LISA ROBERTSON

writer / director

After an early career in dance in her native Australia, a chance meeting with filmmaker, Jane Campion, lead Lisa to train as an actor in both London and San Francisco, and most importantly, with acclaimed coach Larry Moss in Los Angeles. Lisa directed “A Cat on a Hot Tin Roof” in studio, garnering Larry’s support, and launching her career as a coach/director. Coaching both privately and on-set, favorite credits include: Eddie Izzard’s series lead in *THE RICHES* (F/X) on set; also *OCEAN’S 13*, *VALKYRIE* and *RAGE* (dir. Sally Potter); Russell Crowe feature film, *TENDERNESS*; Annabeth Gish, *BROTHERHOOD*; Noel Fisher *THE PACIFIC*, *RED*, *THE RICHES*; Nicki Micheaux *LINCOLN HEIGHTS*, *RAIN* as well as major roles in *MUNICH*; *THE STONING OF SORAYA M* (title role), *POST GRAD*; *RENDITION*; *CITY OF YOUR FINAL DESTINATION*; *MAD MEN*; *THE OC*. She has coached roles on nearly every TV episodic and sit-com.

In theater, Lisa produced and directed *AMERICAN TEN* at the Coast Playhouse, West Hollywood and produced a critically acclaimed production of *KING LEAR*. She was awarded a New Directors Observership by the New York Stage Directors and Choreographers Foundation, which she completed at the Ahmanson Theater, Los Angeles.

Lisa wrote and directed, *THE LETTER*, as submission for the American Film Institute Directing Workshop for Women in 2010 and completed, *COMMERCE*, as part of that fellowship winning a 2011 Adrienne Shelly Foundation Award Grant in support of taking the film to feature. The film received major awards and nominations at Rhode Island International, Vail, Austin, Starz Denver, Little Rock and Bendfilm film festivals in the U.S. Lisa named one of the ten fellows chosen for the 2012 Film Independent Screenwriters Lab for her feature screenplay, *COMMERCE*.

ERICA MCINTOSH producer

ERICA MCINTOSH earned a Bachelor's Degree at California State University Long Beach in Film and Television with an emphasis on Production Management. After graduating, Erica went to work for the CBS series, *JAG*. In 2004, Erica was sponsored into the Producers Guild of America. She currently sits on the PGA FilmUSA Committee. At the moment, Erica is Co-Producing, *ON THE GROUND WITH...*, for the 2011 PGA Produced By Conference in June at the Disney Studios, CA.

Erica has coordinated and/or supervised projects such as, Mark Burnett's hybrid-reality show *GOLD RUSH*, DreamWorks *FLUSHED AWAY* (VG), *WANTED*, *SMITH*, *STARTING UNDER* with Bernie Mac, *THE RICHES*, *INSIDE THE BOX* (for Shonda Rhimes) and *KNIGHT RIDER*. She was tapped by Patrick Massett (Friday Night Lights) to produce the short film, *THE SEER*, starring Linda Purl (The Office).

Erica has recently teamed with Diane Robison, Peter Colley and three time Emmy Award winner, Chas. Floyd Johnson, to collaborate on *HIGH FLIGHT*, a dramatic story that takes place overseas during WWII.

LINDA MONTANTI producer

LINDA MONTANTI studied Film at Columbia University in New York. She completed the DGA/Producer Training Program in New York and then worked as a 2nd Assistant Director for four years before moving to Los Angeles. She has worked as a 1st Assistant Director since then on numerous features, television and commercial productions. Her work has taken her on location to Canada, Australia, and across the U.S. Some of her recent credits include *RIGHTEOUS KILL*, *88 MINUTES*, *THE STARTER WIFE*, *BOOMTOWN*, and *L.A. CONFIDENTIAL*.

DENISE PLEUNE producer

DENISE PLEUNE was born and raised in Grand Rapids, Michigan where she got her start in Post Production doing commercials. Denise spent 5 years in Chicago working for Swell Pictures, Inc. and then made the move to Los Angeles in 1995 to work on *THE X FILES* as Associate Producer. Since then she's worked on TV Series including *MILLENIUM*, *BUFFY*, *THE SARAH SILVERMAN PROGRAM*, *THE RICHES* and *THE BLACK DONNELLY'S*. On the film Adam Sandler's *EIGHT CRAZY NIGHTS* she served as Associate Producer and has since served as Co Producer on *DILBERT*, *THE GOOD GUYS* and the soon to premiere, *EXIT 19*.

KATRINA JANKOWSKI co-producer

KATRINA JANKOWSKI graduated from the University of Michigan with a degree in English Literature. She went on to study acting at the American Conservatory Theater in San Francisco, as well as with Larry Moss, Patsy Rodenburg, and Rachael Adler. She co-wrote a feature film, *NAIL POLISH*, and wrote and directed *UROBOROS*, a stage play produced in San Francisco. She has also worked in film production in New York, and produced and directed several short films for a corporate client in San Francisco. Katrina came to Los Angeles in the Spring of 2010 to study acting with Lisa Robertson, and Lisa invited her to participate in the production of *COMMERCE*. Katrina is currently working on a new screenplay for a feature film.

MICHAEL NEGRIN, ASC

director of photography

As the son of an accomplished cinematographer, Sol Negrin ASC, young MICHAEL NEGRIN had the opportunity to visit film sets starting at age eight, and was hooked. The elder Negrin worked on early rock music films such as *COMCERT FOR BANGLADESH* and John Lennon's *ONE TO ONE* stereo simulcast for ABC, which figured heavily in Michael's start in the music video area. Upon graduating from New York University, he promptly began shooting and producing music promos for Billy Joel, just as MTV was taking off. In 1984-85 he shot several videos for Billy Joel that included Uptown Girl, Tell Her About It and For the Longest Time. Later he photographed Time After Time for Cindy Lauper, which earned an American Music Video Award for Negrin and for the director Eddie Griles.

In 1987, Negrin shot his first feature *TOUCH OF A STRANGER*, that starred Shelly Winters. In 1993 he shot a Roger Corman feature titled *SATURDAY NIGHT SPECIAL* as well as photographed his first hour-long documentary/concert special for PBS on Billy Joel. The following year, he traveled to Hong Kong, Amsterdam and Zagreb Croatia to shoot *NIGHT WATCH*, an action adventure yarn starring Pierce Brosnan. He also photographed the pilot for *CHARMED* for the WB. *THE ATTIC EXPEDITIONS*, an indie feature shot by Negrin, screened in Los Angeles and received rave reviews from the Los Angeles Times. Negrin shot additional principal photography on the NBC series *THE WEST WING* as well as the FOX series *THE O.C.*

A feature shot in New Orleans just before Hurricane Katrina, *LOCAL COLOR*, opened the Tribeca film Festival and starred Ray Liotta, Armin Mueller Stahl and Ron Pearlman. That was followed by *HOMELAND SECURITY*, a feature film starring Antonio Banderas and Meg Ryan as well as the Holly Hunter series Saving Grace for TNT. In 2008 and 09 Negrin shot *LIFE* for NBC Universal starring Damian Lewis as well several episodes of Desperate Housewives and the NBC series, *THE CAPE*.

STUART MICHAEL THOMAS

original music

STUART MICHAEL THOMAS is a composer/producer living in Los Angeles. His music can be heard on films such as *MICHAEL CLAYTON*, *GNOMEO & JULIET*, *SALT*, *THE GREEN HORNET* and the upcoming Tom Hanks film, *LARRY CROWNE*. In addition, he has co-produced numerous soundtracks with award-winning composer James Newton Howard including *CHARLIE WILSON'S WAR*, *THE GREAT DEBATORS*, *THE TOURIST* and *THE HUNGER GAMES*.

CARTER CARTER

editor

CARTER CARTER is an LA based film and TV editor. He has edited everything from the trashiest celeb-reality shows to indie features and shorts. He studied art at the Rhode Island School of Design and used to be a competitive snowboarder.

COMMERCE

CAST

JOEL GRETSCH

KEN



JOEL GRETSCH is currently Father Jack Landry on ABC's updated version of *V*.

Joel Gretsch is best known for his work playing Tom Baldwin on the TV series *THE 4400*. Audiences were first introduced to his talent when he received rave reviews for his major motion picture debut, his portrayal of Bobby Jones for director Robert Redford in *The Legend of Bagger Vance*, starring Matt Damon, Will Smith and Charlize Theron.

In 2002 Gretsch was featured alongside Tom Cruise in the Steven Spielberg film *MINORITY REPORT*. He also starred opposite Kevin Kline in *THE EMPEROR'S CLUB* and in the Steven Spielberg-produced, Emmy-award winning miniseries, *TAKEN*.

Most recently appeared in *National Treasure: Book of Secrets*, *Saving Grace* and *Push*, Gretsch can also be seen in the series *UNITED STATES OF TARA*, opposite Toni Collette, as well as the feature *SHRINK*, alongside Kevin Spacey. In addition he has appeared in such television shows as *CSI: MIAMI*, *LAW & ORDER*, *JOURNEYMAN* and *PLAYBOY CLUB*.

A Minnesota native, Gretsch studied acting at the renowned Guthrie Theatre for six months prior to moving to Los Angeles. He made his professional debut in the production of *Tartuffe*, and subsequently starred as the title character in John Patrick Shanley's West Coast production of *DANNY AND THE DEEP BLUE SEA*.

ANNABETH GISH

BETH



ANNABETH GISH is a multi-talented actress with a diverse background in film and television. She will soon be seen opposite Sam Worthington and Chloe Moretz in the Ami Canaan Mann feature, *THE FIELDS*.

Gish first gained the attention of critics and moviegoers at the age of 13 in the feature film, *DESERT BLOOM*. She went on to star in the acclaimed feature, *MYSTIC PIZZA*, with Julia Roberts. Her expansive list of film credits include *DOUBLE JEOPARDY*, Sundance Film Festival favorite, *SLC PUNK*, *WYATT EARP*, *NIXON*, *BEAUTIFUL GIRLS*, *THE LAST SUPER*, *COUP DE VILLE*, *SHAG*, *STEEL* and the independent film *KNOTS*. Other credits include starring roles in *BUYING THE COW*, *RACE TO SPACE* with James Woods, and *THE CELESTINE PROPHECY*.

Annabeth's television include the hit series *THE WEST WING*, and *THE X FILES* and her critically lauded series led role in Showtime's *BROTHERHOOD*. Mini-series and TV movies include *DETECTIVE*, PBS Masterpiece Theater Classic *A DEATH IN THE FAMILY*, *SEALED WITH A KISS*, *DIFFERENT*, *GOD'S NEW PLAN*, *TO LIVE AGAIN*, *TRUE WOMEN* with Dana Delaney and Angelina Jolie, the mini-series adaptation of Stephen King's novel *DESPERATION*, Hallmark Hall of Fame's critically acclaimed *CANDLES ON BAY STREET*, Martha Coolidge's *AMERICAN GIRL: CHRISSA STANDS STRONG* and the Lifetime *MOW*, *AT RISK*, based on Patricia Cornwall's novel. She has recently recurred on *PRETTY LITTLE LIARS* and will be seen in the new FX series *THE BRIDGE*.

NOEL FISHER

PETE



NOEL FISHER can be seen in the highly successful, Columbia feature film *BATTLE: LOS ANGELES*, with his epic portrayal of rookie Marine Pfc. Shaun Lenihan, opposite Aaron Eckhart. He is also currently filming the latest chapter in the worldwide phenomenon *THE TWILIGHT SAGA: BREAKING DAWN PARTS 1 & 2*, playing the intense role of Vladimir, a Romanian vampire (slated for release in late 2011 and 2012). He is also appearing in the new, hit Showtime series *SHAMELESS*, as Mickey Milkovich, opposite William H. Macy and Emmy Rossum.

Originally from Vancouver, B.C. Fisher has been steadily gaining momentum as an actor since he was 14 years old. His first role was in a TV movie called *THE SHELDON KENNEDY STORY* for CBC in 1999. The role landed Fisher his first prestigious Canadian GEMINI nomination, which was followed with a second nomination for his work on the hit Canadian series *GODIVA'S* [2005-2006].

Once gaining momentum in Canada, Fisher started appearing on various US television series such as *TWO AND A HALF MEN*, *THE MENTALIST*, *MEDIUM*, *LAW & ORDER: SVU*, *HUFF* and *BONES*. In 2008, he went to Sundance with the independent film *RED* [Official Selection] alongside Brian Cox. 2010 was a stand out year for Fisher, as he was seen in the HBO nominated miniseries *THE PACIFIC*. His other television credits from last year include solid performances in *LIE TO ME*, *TERRIERS*, and *DARK BLUE*. Audiences may remember Fisher from his breakout performance in the critically acclaimed FX series *THE RICHES*, portraying Cal, the conniving and clever son of Eddie Izzard and Minnie Driver.

SCARLET O. SELZNICK

ESSIE



SCARLET O. SELZNICK is currently studying dance and competing in dance competitions in and around Southern California with MNR Dancefactory, and recently performed in the half-time show at an LA Clippers game at Staples Center.

She made her acting debut as Ava in the USC student short, *THE SILENCE IN SIGH* (dir. Freddy Gaitan) as a six year old who drowns while playing by the pool during her weekly visit with her deaf Father. Her family enjoys a long history with both Hollywood (David O. Selznick) and Dance; her father, Tony Selznick is a founding partner of the premiere Choreographer/Dancers agency, McDonald, Selznick and Associates. Scarlet is excited to be making her big screen debut in *COMMERCE*.

COMMERCE
Screen Credit

SINGLE CARDS

Written and Directed by	Lisa Robertson
Produced By	Erica McIntosh Linda Montanti Denise Pleune Lisa Robertson
Co-Producer	Katrina Jankowski
Director of Photography	Michael Negrin ASC
Editor	Carter Carter
Costume Designer	Darragh Marmorstein
Original Music By	Stuart Michael Thomas Joel Gretsch Annabeth Gish Noel Fisher And introducing Scarlet O. Selznick
First Assistant Director	Linda Montanti
Second Assistant Director	Beryl Cohen Lily Garcia Leah King Cara McCastlain

CAST

Ken	Joel Gretsch
Beth	Annabeth Gish
Pete	Noel Fisher
Essie	Scarlet O. Selznick
Cab Driver	David Ibrahim
Homeless Woman	Jean Montanti
Bus Driver	Teresa Mosley
Casino Manager	Steve Infield
Corporate Woman	Sheila Mears
Losing Man	Earl Carroll

GROUP CARDS

“A” Camera Operator
“B” Camera Operator
First Assistant Camera

Second Assistant Camera

Stills Photographer
Script Supervisor

Set Costumer
Assistant Costume Designer
Key Hair Stylist
Key Make-up Artist
Make-up Artist

Sound Mixer

Boom Operator

Key Grip
Gaffer
Grip/Electricians

Stunt Coordinator

Production Coordinator
Assistant Production Coordinator

Second Second Assistant Director

Set Decorator/Property Master
On Set Dresser

Post Production Supervisor

Supervising Sound Editor
Re-Recording Mixer

Sound Effects Editor
Dialogue Editor
Foley Editor and Recordist

Robert Edesa
David Tolsky
Jennifer Braddock
Lisa Ferguson
Carole McClintock
Kristina K. Carruci

Katrina Marcinowski
Dennis Marrell
Mary Shellogg
Leslie Elaine
Heather Karasek
Mark Anthony
Narcisse Chico Kitabata
Crystal Sadek
Stacey Hackett

Kevin Compayre
Greg Cosh
Billy O’Connell
Marcus Ricard
Nora Cosh

Jay Hergott
Ron Geary
Scott Jarrett
Donald McKinnon
Ryan Weeda

Scott Wilder

Erica McIntosh
Lorie Dennis

Julia Lennon
Ellen Roentreter

Alexandra Fulton
Lindse Fletcher

Denise Pleune

Ken Gladden
David Raines CAS
Mark Server
Albert Ibbotson
Ken Gladden
Adam Decoster

ADR and Foley Recordist
Post- Production Sound Assistant

Tom Kilzer
Nate Poptic

Background Artists

LA Casting

Caterer
Caterer Assistant
Craft Service
Craft Service Assistant
Studio Teacher

Bruce's Gourmet Catering
Paula Strode
Tom Kremer
Penny Ray
Marcy Gossett
Rachael Tannenbaum

Assistant to The Producers
Camera Production Assistant
Locations Assistant
AD Production Assistant

Kendra Gilbert
Julian Shaheen
Vera Meyer
Shane McLoughlin
Marty Reuter
John Robinson

AFI Interns
Wade Morrison
Colin Olsen

Francesco Palmero
Gavin Sanders

Production Assistants
Oscar Alfonso
Briana Anthony
Keith Baker
Michael Cruz
Chris Farentino
Roxanna Kroll

Leah Sargent
CJ Read
Teri Reeves
Elena Talan
Kayreth Willams
Ty Wilson

Audio Post Services
Color
Colorist
Technicolor Project Manager

Courtesy of LARSON STUDIOS
Courtesy of TECHNICOLOR
Wayne Hampton
Elle Gerreau

VERY SPECIAL THANKS

Eddie Izzard
Dawn Prestwich and Nicole Yorkin
Peg Yorkin
Denise Pleune
Jamie and David Thompson
Kyle Secor
Jason Isaacs
Larry Moss
John Griffo
Tricia Robertson

COMMERCE CASINO is proud to support the advancement of women in the media arts.

SPECIAL THANKS

Ellie Herman
Mili Avital & Charles Randolph
Daniel Bess
Sean Rush
Roger Rodd
Kristina Lear
Buddy Joe Hooker
Barbara Doyle
Andy & Darcy Romanov
Michael Grant Terry
Jeremy Podeswa
Julie Lynn
Susan Cohen
Joanne Baron
Sarah Townsend
Barbara Minton
Shane Stevens
Robert Merrill
Joe Reegan
Leonardo Nam
Angela Courtin and Lisa Eisenpresser
Theo & Juliet
Michael J Carne
Derek Webster
Mark Dacascos
Roxanna & Mitch Kroll
Elizabeth Prestel
Morgan Lariah
Joe Petricca
Chris Schwartz
Patty West

Commerce Casino - John Griffo, Kathy Corona, David Mosikian
MTA – Don Baumgartner, Leona Swedenhjelm
Paul M Brown & New Wave Entertainment
Rick Larson, Scott Turner & Larson Studios
Elle Gerreau & Technicolor
Cliff Hsui & Sim Video
Jean Montanti – Original Artwork
Film LA
City of Commerce
The Residents of Ridgewood Avenue
The Staff and Patrons of Commerce Casino

This film is dedicated to the memory of Ian Robertson (1940-2007)

Videotape equipment courtesy of Sony Corporation of America

24P HD camera equipment courtesy of Sony Corporation of America

The characters and events depicted in this motion picture are fictitious. Any similarity to actual persons, living or dead, is purely coincidental.

This motion picture is the property of the American Film Institute and is protected under the copyright laws of the United States and other countries. Unauthorized duplication, distribution or exhibition may result in civil liability and criminal prosecution.

A Project of the Directing Workshop for Women at AFI

Funded by:

AFI Associates

Jean Picker Firstenberg Endowment

National Endowment for the Arts

Sony Corporation of America

Creative Cow

And other generous corporations and individuals committed to providing opportunities for women in the media arts

© copyright MMXI

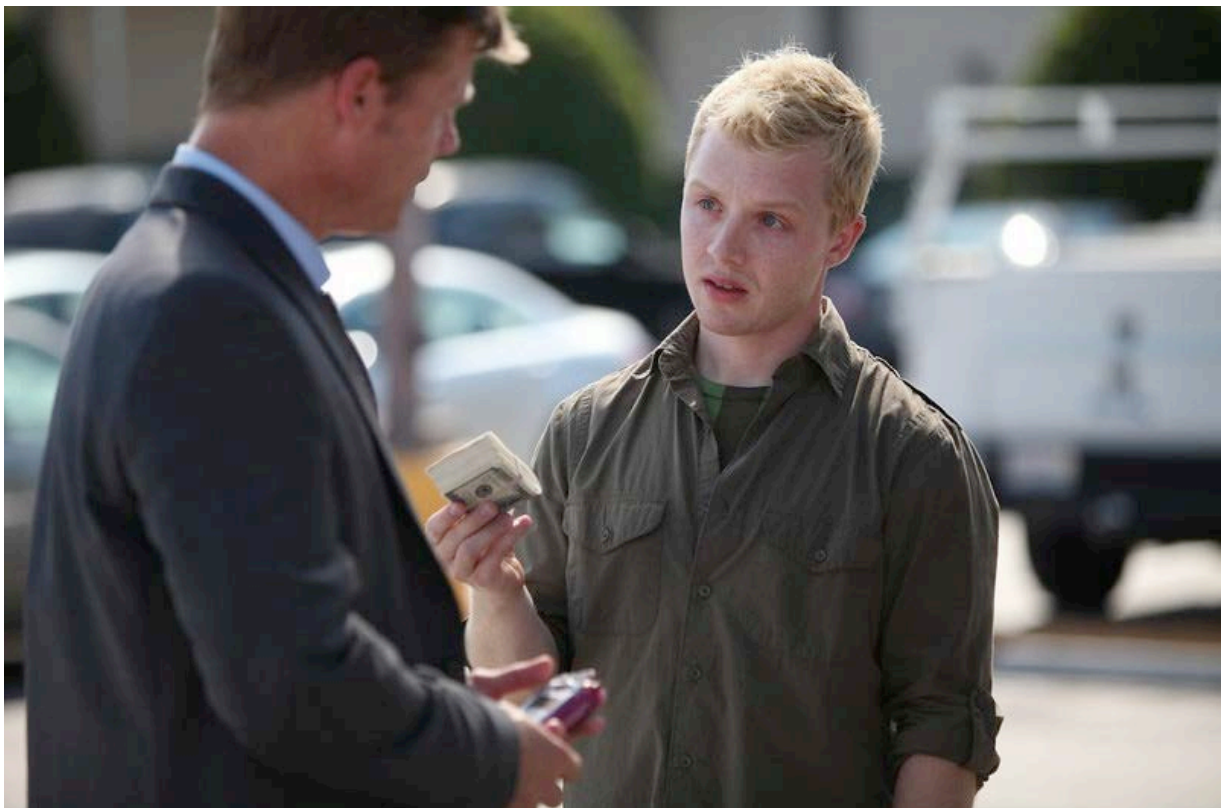
AFI (LOGO)

COMMERCE

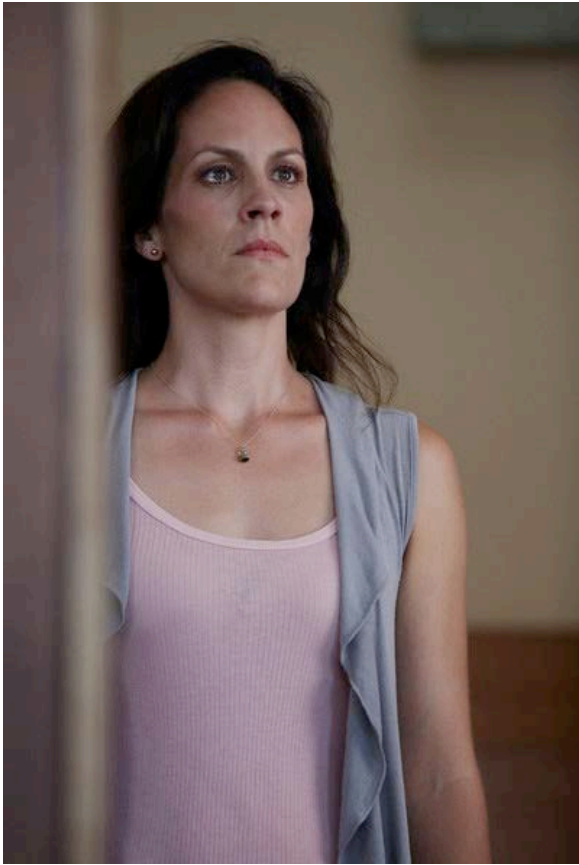
PRODUCTION STILLS



KEN (Joel Gretsch) struggles to reach a decision.



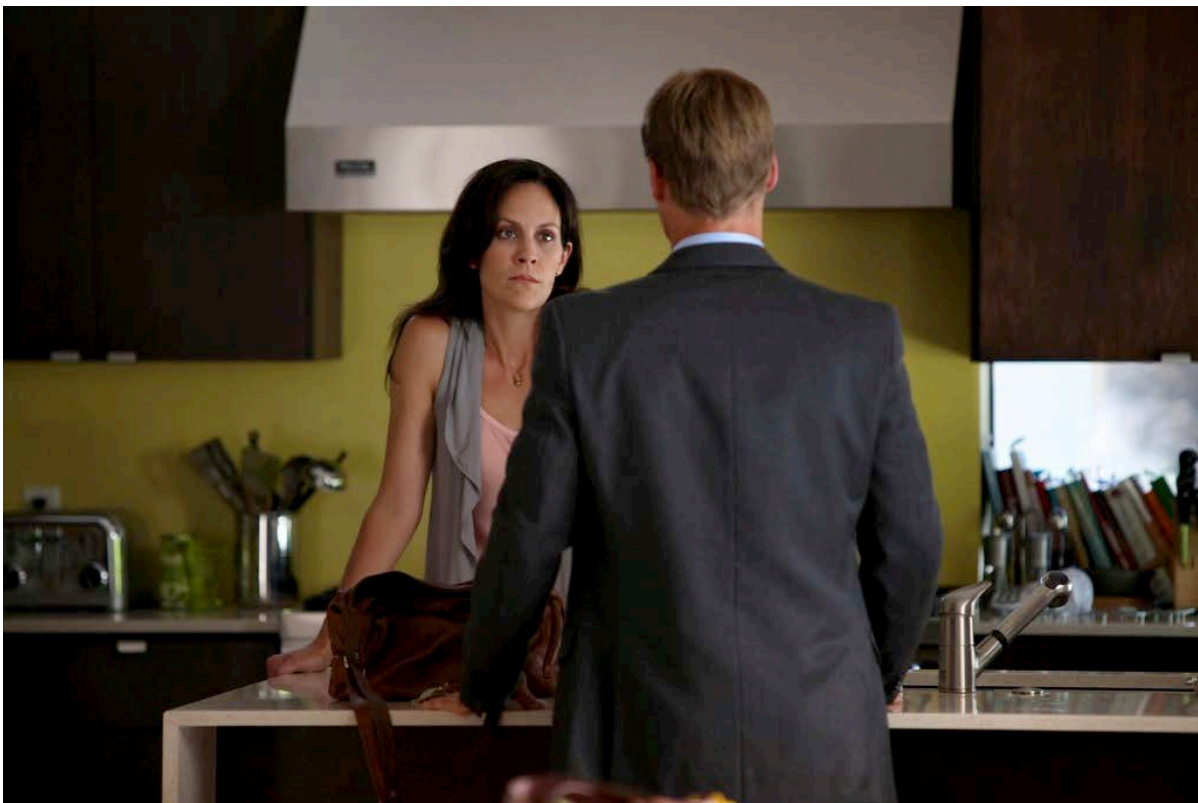
PETE (Noel Fisher) makes Ken (Joel Gretsch) a proposition.



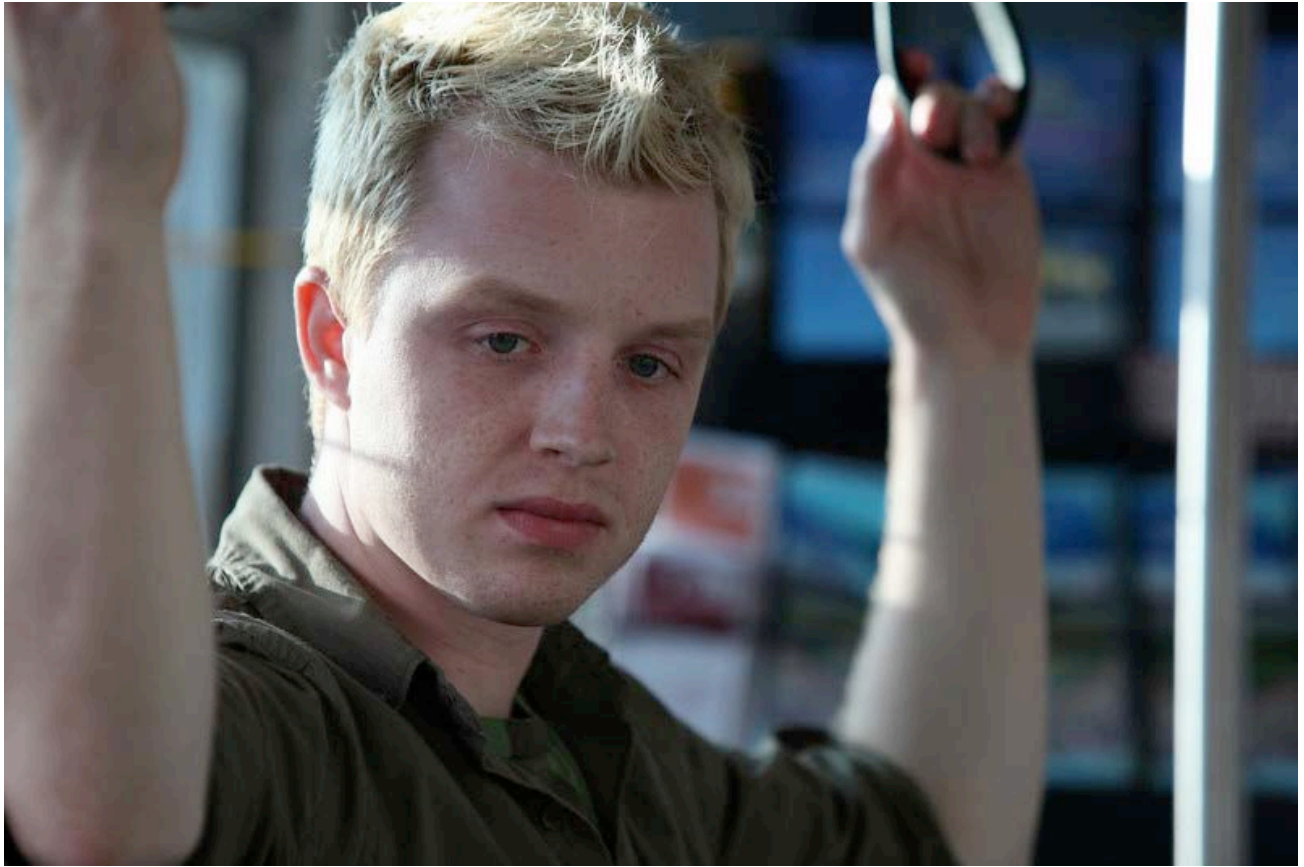
BETH (Annabeth Gish) finds new determination to uncover the truth



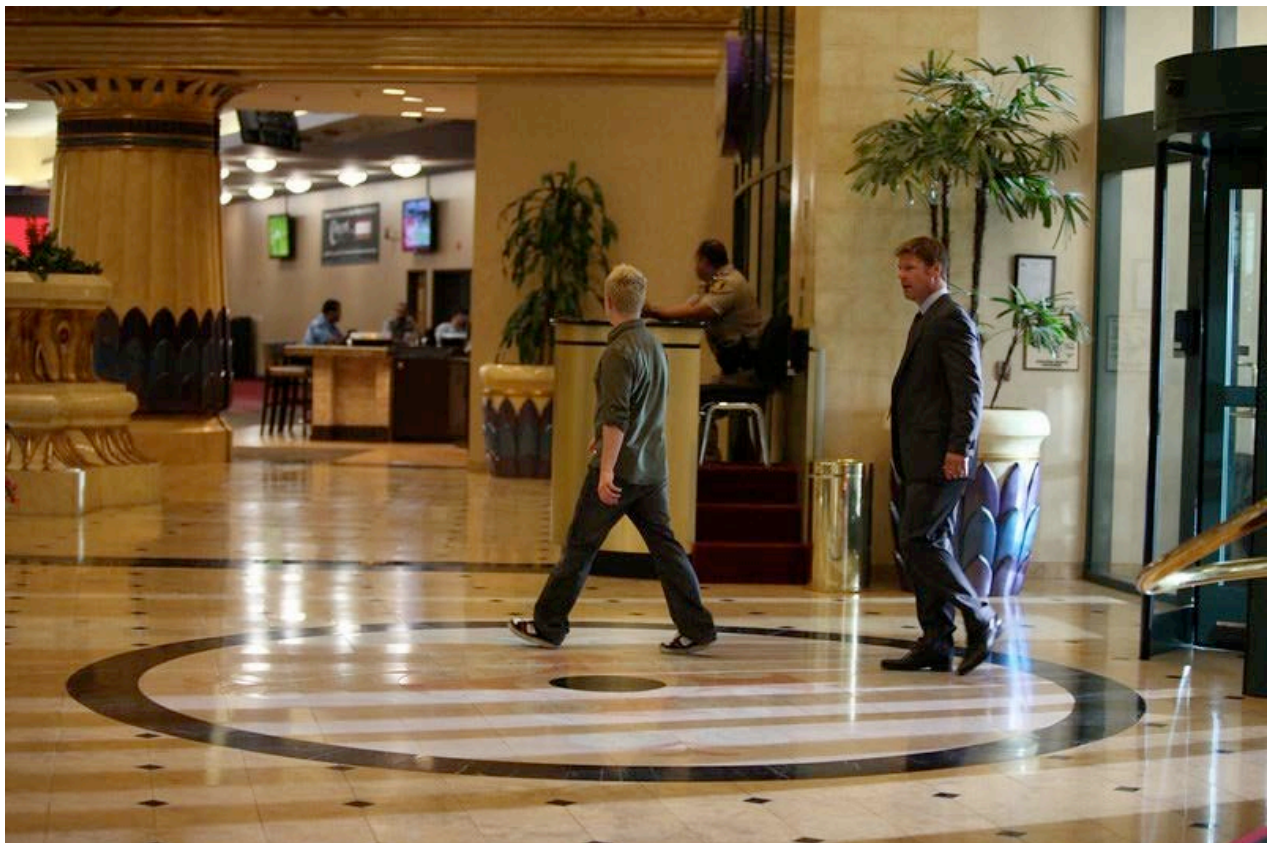
ESSIE (Scarlet O. Selznick) dances to escape the confusion of her family.



BETH (Annabeth Gish) confronts husband, Ken.



PETE (Noel Fisher) encounters Ken on an LA City bus.



KEN (Joel Gretsch) and PETE (Noel Fisher) enter Commerce Casino.



KEN (Joel Gretsch) waits uneasily outside Commerce Casino.



KEN (Joel Gretsch) and PETE (Noel Fisher) share a bottle at the Commerce Casino bus stop.



Writer/Director, LISA ROBERTSON and DP, MICHAEL NEGRIN ASC, on set at Commerce Casino.



Director LISA ROBERTSON, in discussion on set with SCARLET O. SELZNICK.



LISA ROBERTSON directs the action at the Beverly/Western bus stop.



Director of Photography, MICHAEL NEGRIN ASC.

CONTACT INFORMATION

Lisa Robertson

TIME/STEP FILMS

E | Commercefilm@gmail.com

P | 310 367 4136

FILM SALES

SHORTS INTERNATIONAL

For the America's and Asia Pacific Rim:

Linda Olszewski - linda@shortsinternational.com

+1.310.829.6815

For Europe, the Middle East and South Asia

Izabelle Durian – izabelle@shortsinternational.com

+44 (0) 207 613 5400

TECHNICAL INFORMATION

TRT 17:37

NTSC

5.1 Dolby Stereo Surround

16 x 9

COLOR

www.commercethemovie.com

AWARDS

BEST SHORT FILM

2012 Catalina Film Festival

BEST STUDENT FILM

2012 Vail Film Festival

FIRST PRIZE, BEST ACTRESS: ANNABETH GISH, "COMMERCE."

2011 Rhode Island International Film Festival

ADRIENNE SHELLY FOUNDATION AWARD GRANT:

Best Short Film "COMMERCE" in support of taking the short to full-length feature.

2011 American Film Institute Directing Workshop for Women/ Director's Guild of America

AUDIENCE AWARD: for Short Film – and Overall Festival Audience Award Second Place

2011 Breckenridge Festival of Film (31st Annual), Colorado.

FESTIVALS

OFFICIAL SELECTION:

2011 AUSTIN FILM FESTIVAL

2011 STARZ DENVER FILM FESTIVAL

2011 BENDFILM, OREGON

2011 RHODE ISLAND INTERNATIONAL FILM FESTIVAL

2011 BOSTON FILM FESTIVAL

2011 LITTLE ROCK FILM FESTIVAL

2011 BRECKENRIDGE FESTIVAL OF FILM

2012 VAIL FESTIVAL OF FILM

2012 CATALINA FILM FESTIVAL

2012 PARK CITY FILM MUSIC FESTIVAL

2012 L.A SHORTS FILM FESTIVAL

2012 SAN DIEGO FILM FESTIVAL

2012 TACOMA FILM FESTIVAL

2012 RAINDANCE FILM FESTIVAL – LONDON (International Premiere)

2013 SELF-MEDICATED FILM FESTIVAL (Texas) – UPCOMING.